



Bolt 920 MHz PCB Antenna

Datasheet

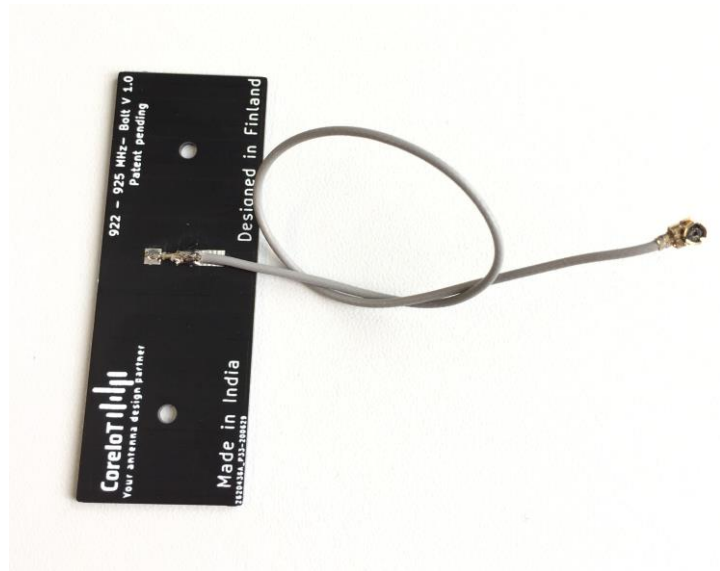
Bolt 920 MHz PCB Antenna

Electrical Specifications

1. Frequency: 920 – 928 MHz
2. Impedance: 50 Ω

Equipment Used

1. ETS 8050 Antenna Anechoic chamber
2. Keysite 5071C VNA (Radiation pattern Measurement)
3. Agilent 5071C VNA (Return Loss Measurement)



| BAND | 920-928MHZ |
|-----------------------|------------------|
| STANDARD | ISM |
| Frequency(MHz) | 920 MHz ISM Band |
| Max. VSWR | 1.38 |
| Max. Return loss (dB) | -15.78 |
| Peak gain(dBi) | 0.26 |
| Efficiency(%) | 71 |
| Radiation properties | Omni-directional |
| Max. input power | 5 |
| Polarization | Linear |
| Impedance(ohms) | 50 |

Bolt 920 MHz PCB Antenna

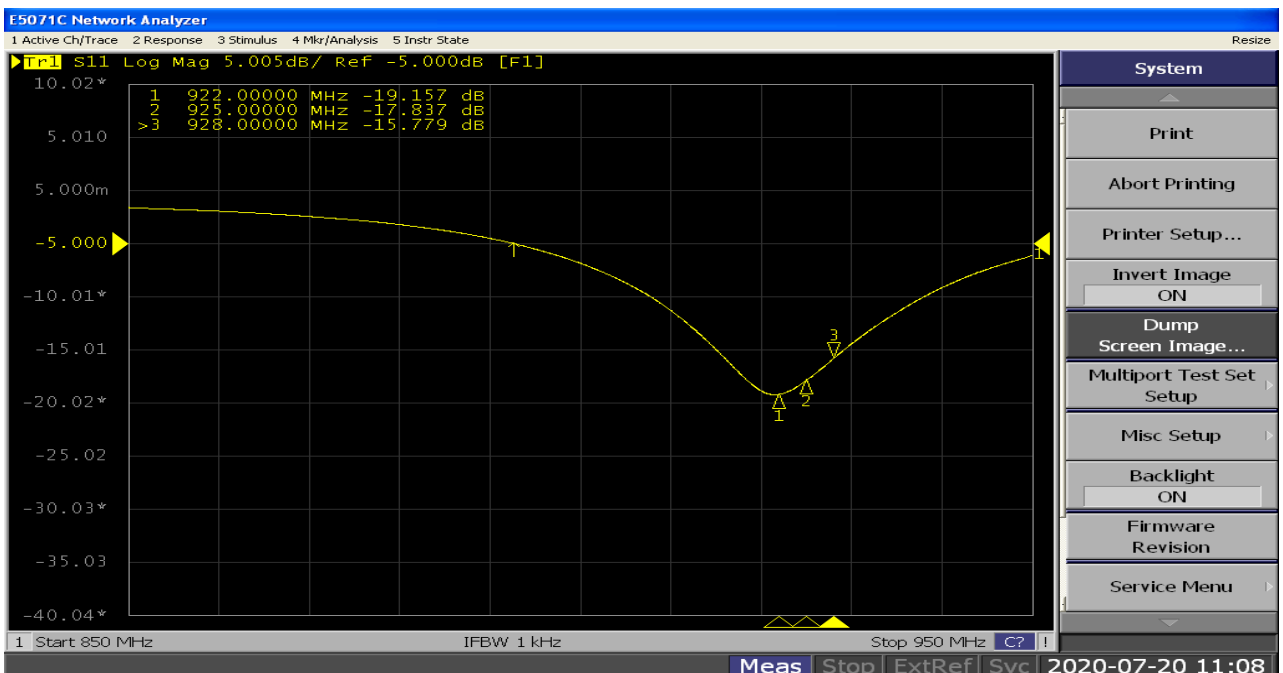
Features

1. Small size
2. >71% efficiency on all bands
3. 0,26 dBi Peak Gain
4. 64*20*1 mm size
5. Adhesive tape / Glass Mount Design
6. IPEX MHFI, UFL Compatible

Applications

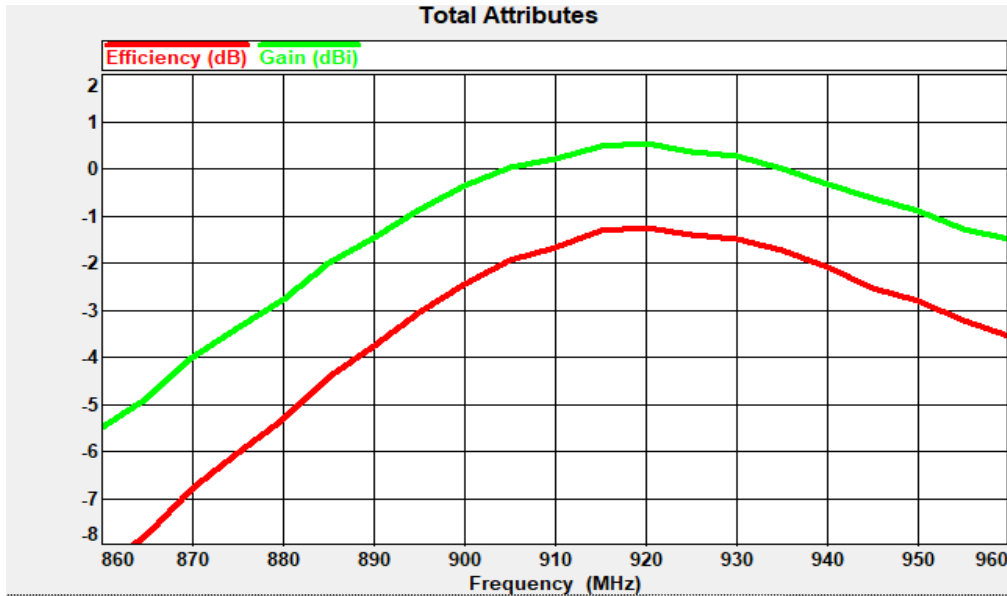
1. Smart metering
2. Agriculture
3. Farming
4. Industrial

Return Loss



Bolt 920 MHz PCB Antenna

Efficiency and Gain



Radiation Pattern

